

2-DAY **FIRST CAPITOL AUCTION INC.** Northern California's Leading Auction Company

NO MINIMUM ★ NO RESERVE ★ GOVERNMENT ENDORSED PUBLIC AUCTION

Bay Area Contractors ★ Hertz Equipment Rental ★ Gov't Agencies

DAY 1: FRIDAY, FEBRUARY 19, 2016 AT 9:00 A.M.

★ RING 1: Construction, Rental Equipment, Large Trucks & Trailers ★

★ RING 2: Fence Line (Over 350) Lots of Misc. Equipment, Power Tools, Lumber & Construction Supplies ★



CA
RETROFIT

2000 STERLING VAC-CON VACTOR TRUCK



2007 INTERNATIONAL 4200 2,000-GALLON
WATER TRUCK

**BID ONSITE
OR ONLINE!**



CA
RETROFIT

2007 STERLING SC8000 ELGIN SWEEPER



JOHN DEERE 624E RUBBER TIRE LOADER

DAY 2: SATURDAY, FEBRUARY 20 AT 10:00 A.M.

★ RING 1: Asset Seizures, Real Estate, (350+) Gov't Fleet Vehicles, Light Trucks, Boats, Motorcycles, Buses & More! ★

50 SOLANO AVENUE, VALLEJO, CALIFORNIA • SAN FRANCISCO BAY AREA

Inspection: Thursday, February 18 from 9:00 A.M. – 4:30 P.M.



**FIRST
CAPITOL
AUCTION INC.**

COMMERCIAL LIQUIDATORS & APPRAISERS

LIVE INTERNET BIDDING
Available Through proxibid.com.™

Phone (707) 552-0739
Fax (707) 552-8613

50 Solano Ave., Vallejo, CA 94590

Visit our Website at www.1stcapitolauction.com

e-mail: auctioncap@aol.com
BOND #14663700622 • CSL #A1621

DAY 1: FRIDAY, FEBRUARY 19, 2016 AT 9:00 A.M.

RING 1: Construction, Rental Equipment, Large Trucks & Trailers



VOLVO 1,800-GALLON WATER TRUCK



JLG 450A ARTICULATING BOOM LIFT



2003 AUTOCAR XPEDITOR SIDE LOADING REFUSE TRUCK



2003 JLG 800A 4X4 BOOM LIFT



2010 LEEBOY 4870 CHALLENGER RIDE-ON SWEEPER, ONLY 615 HOURS



2000 VOLVO 3-AXLE ROLL BACK REFUSE TRUCK



MACK CH600 3-AXLE TRUCK TRACTOR



JOHN DEERE 455D CRAWLER LOADER



CATERPILLAR CB-224D TANDEM ROLLER



2014 HYSTER G118 ELECTRIC FORKLIFT, NEW AND UNUSED

CONSTRUCTION EQUIPMENT

JOHN DEERE 624-E Rubber Tire Loader, diesel eng., 102" GP bucket, canopy, 20.5x25 rubber tires, 11,752 hours, s/n DW624EB521699.

JOHN DEERE 210 LE 4X4 Skip Loader, diesel eng., 4-in-1 bucket, 80" box, s/n T0210LE881497.

CASE 570 4X4 Skip Loader, 4-in-1 bucket, Gannon scraper box, s/n 1926001.

2004 BOBCAT 435-G Mini Excavator, diesel eng., quick release bucket, hydraulic thumb, backfill blade, rubber tracks, s/n 562811241.

KUBOTA RFP2240 Mini Excavator, rubber tracks, backfill blade, s/n KH368414.

JOHN DEERE 455-D Crawler Loader, 4-in-1 bucket, double barrel 5-shank ripper, s/n T0455DX722157.

GRADALL G3WD 4X4 Rubber Tire Excavator, Cummins diesel eng., 8' level cut depth, cab, 7,213 hours, s/n G01D167.

2010 LEEBOY 4870 Challenger V Ride-On Sweeper, Caterpillar diesel eng., 4-way 8' broom spray system, cab, heat/AC, 200-gallon water tank, 615 hours, s/n 602578.

(2) **1995 BROCE RC300 Ride-On Sweepers**, Cummins diesel eng., 8' broom spray system, 170-gallon water tank, cab, heat, 2,959 and 2,431 hours, s/n 87664, 87663.

JOHN DEERE 6410 Utility Tractor, Tiger side boom mower, 3-pt. hitch, PTO, aux. hyd., cab, heat/AC, 3,072 hours, s/n L06410S231360.

TIGER 5610 Special Utility Tractor, Tiger side mower, PTO, cab, heat/AC 18.4x30 rear tires, 215x85x16 front tires, 1,975 hours, s/n 707041.

JOHN DEERE 7220 4X4 Utility Tractor, 3-pt. hitch, PTO, aux., cab, heat/AC, 20.8x38 rear tires, 16.9x28 front tires, 4,616 hours, s/n 0M001648.

CATERPILLAR CB224-D Double-Drum Roller, diesel eng., 47" drums, dual vibratory spray system, canopy, 1,899 hours, s/n 44C8RZ01249.

BOMAG BW90 ADL Double-Drum Roller, 36" tandem drums, vibratory.

1999 CRAFTCO SS60 Towable Crack Sealer, gas eng., LP burner, ball hitch, s/n 1C9SV0817X1418239.

APPLIED Green Machine 414-RS Walk-Behind Sweeper, Kubota diesel eng., 1,420 hours, s/n 0603122.

3-Pt. Tiller Attachments.

BOBCAT Trencher Attachment.

FORKLIFTS & REACH EQUIPMENT

SKYTRACK 8042 4X4 Telescopic Forklift, 3-stage, diesel.

(2) **DOOSAN D35S Warehouse Forklifts**, Doosan diesel eng., 6,700-lb. cap., 3-stage mast, 1,284 and 1,417 hours, s/n K6-00211 and H2-00109.

2003 JLG 800-A 4X4 Boom Lift, Duetz diesel eng., 80" platform height, 53' platform reach, 4,481 hours, s/n 0300073917.

1999 JLG 450A 4X4 Knuckle Boom Lift, Duetz diesel eng., 45' platform height, 25' platform reach, 3,284 hours, s/n 0939520300043847.

CLARK Forklift, propane eng., 5000-lb. cap., 2-stage mast, s/n HY355-11-2531.

(2) **1995 HYSTER Warehouse Forklifts**, Isuzu diesel eng., 6,000-lb. cap., 3-stage mast.

LIFT ALL MT-70 Forklift, dual fuel, 7,000-lb. cap., 3-stage mast, 1,312 hours, s/n 705101.

SKYJACK SJ7027 Scissor Lift.

GENIE SLC24 Material Lift.

2000 JCB Loadall 526 Reach Forklift, 2-stage boom, aux. hyd., 4-wheel steer, 5000-lb. cap., cab, heat/AC, 3638 hours, SLP52655YE0282703.

HYSTER G118 Forklift, model R30XM2, unit is complete w/charging unit, **new and unused - zero hours!**

GENERATORS, COMPRESSORS, MESSAGE BOARDS & PUMP

CATERPILLAR 3208 Gen Set, diesel eng., 3-phase, 100 kva, 60 hertz, 480 volts, 150 amps, 18 volt, 5,543 hours.

(4) **INGERSOLL RAND P-185 Towable Air Compressors**, John Deere diesel eng., 185 CFM, pintle hitch.

JOHN DEERE Diesel Engine, 185 CFM, ball and pintle hitch, from 1,502 hours.

INGERSOLL RAND P-175 Skid Mounted Air Compressor, John Deere diesel eng., 175 CFM, electric hose reel, pintle hitch, s/n 36501880.

GENIE Towable Light Tower.

(5) **3M Towable Message Boards.**

(2) **ALLMAND Eclipse Towable Arrow Boards**, electric eng., pintle hitch, s/n 0418AB0Z.

WANCO WTSP75-LSAC Towable Arrow Board, electric eng., ball hitch.

GORMAN-RUPP T6A60S Towable 6" Pump, John Deere diesel eng., ball hitch, 1,827 hours, s/n 1337816N.

TRENCHERS, BRUSH CHIPPERS & MOWERS

DITCH WITCH 1030-H Walk-Behind Trencher, gas eng., no hours, s/n 1X2172.

VERMEER BC-1000 Towable Chipper, Cummins diesel eng., pintle hitch, 1,293 hours, s/n A9X100012.

BRUSH BANDIT 250 Towable Chipper, John Deere diesel eng., pintle hitch, 2,657 hours, s/n 9018167.

BRUSH BANDIT 6" Towable Chipper.

VERMEER SC252 Self-Propelled Stump Grinder.

JACOBSEN HR-9016 4X4 Ride-On Mower, Kubota diesel eng., front and side mower decks, cab, heat/AC, 2,291 hours, s/n 7052.

(3) **KUBOTA F-3680 Ride-On Mower**, Kubota diesel eng., 72" mower deck, cab, heat, from 726 hours.

JOHN DEERE 2243 Ride-On Mower, Kawasaki gas eng., 1,269 hours, s/n 958091.

BILLY GOAT Mowers.

JOHN DEERE 365 Towable Mower Attachment.

3 WAYS TO BUY AT A FIRST CAPITOL AUCTION

★ Live Onsite ★ Absentee Bid ★ Simulcast on the Internet @ www.proxibid.com ★

NO MINIMUM ★ GOVERNMENT ENDORSED PUBLIC AUCTION

GOV'T FLEET VEHICLES FROM OVER 35 SAN FRANCISCO BAY AREA CITIES, COUNTIES & MUNICIPALITIES



JOHN DEERE 210LE 4X4 SKIP LOADER



BOBCAT 435G MINI EXCAVATOR WITH THUMB



2008 INTERNATIONAL TYMCO SWEEPER TRUCK



JACOBSEN HR-9016 4X4 RIDE-ON MOWER



JOHN DEERE 7220 4X4 UTILITY TRACTOR



2000 FREIGHTLINER FL80 VAC-CON TRUCK



SKYTRAK 8042 4X4 TELEHANDLER



(1 OF 4) INGERSOLL RAND 185 AIR COMPRESSORS



BANDIT AND VERMEER BRUSH CHIPPERS



(1 OF 2) LADDER TRUCKS

**HONDA Mowers, Power Trim Edgers,
JOHN DEERE GS30 Walk-Behind Mower,
TORO Walk-Behind Mowers.**

WATER, DUMP & TRUCK TRACTORS

2007 INTERNATIONAL 4200 2,000-Gallon Water Truck, diesel eng., low miles.

1998 VOLVO 2-Axle 1,800-Gallon Water Truck, Volvo diesel eng., Eaton Fuller manual trans., Chelsea PTO, McClellan tank, front, rear and side sprays, 503,966 miles.

1994 INTERNATIONAL 4700 Water Truck, International diesel eng., Allison A/T, CA Retrofit.

2003 INTERNATIONAL 7600 3-Axle 6X4 Dump Truck, diesel eng., Allison auto. trans., Munice PTO, dump body, CA Retrofit, non-runner, 100,873 miles.

2000 FORD F-450 Dump Truck, gas eng., A/T, Western Truck Fab dump bed, 81,468 miles.

1997 GMC C8500 3-Axle Dump Truck, Caterpillar diesel eng., Allison auto. trans., Scelzi dump bed body, 119,694 miles.

1996 INTERNATIONAL 4900 Dump Truck, International diesel eng., A/T, CA Retrofit.

1997 GMC 5-Yard Dump Truck.

GMC Topkick 2-Axle Dump Truck, Caterpillar diesel eng., Quadco auto. trans., Chelsea PTO, Northbay dump bed, non-compliant, only 13,599 miles.

FORD 2-Axle Dump Truck, gas eng., auto. trans., Chelsea PTO, dump bed, 90,895 miles.

FORD 8000 3-Axle Dump Truck, Caterpillar diesel eng., auto. trans., dump bed, 58,917 miles.

1987 INTERNATIONAL 3675 5-Yard Dump Truck.

1984 GMC General 3-Axle Dump Truck, Cummins diesel eng.

1997 FORD F-250 Heavy-Duty Pickup w/ Dump Bed, gas eng., auto. trans., 92,216 miles.

1995 MACK CH600/E7 3-Axle Truck Tractor, Mack diesel eng., manual trans., 167,413 miles.

KENWORTH w/900A 3-Axle Truck Tractor, diesel eng., Eaton Fuller manual trans., Chelsea PTO, 754,439 miles.

VAC-CON RODDER & REFUSE TRUCKS

2006 AUTOCAR 3-Axle Refuse Truck, Cummins diesel eng., auto. trans., 120,400 miles, CA Retrofit.

2000 STERLING Vac-Con 3-Axle Vector Truck, diesel eng., Allison auto. trans., code 3 Arrowstik, hoses and reels, Vac-Con vector body, CA Retrofit, 33,611 miles.

1993 GMC Topkick Rodder Truck, Caterpillar diesel eng., auto. trans., Chelsea PTO, flexible hi-power sewer, non-compliant 41,379 miles.

2005 AUTO CAR Xpeditor 3-Axle Side Loader Refuse Truck, Cummins diesel eng., Allison auto. trans., Heil Rapid Rail refuse body, 163,702 miles, CA Retrofit.

2000 VOLVO 3-Axle Roll-Back Refuse Truck, Cummins diesel eng., Allison auto. trans., Dentonis roll-off refuse body, CA Retrofit, 87,820 miles.

MITSUBISHI FUSO Vacuum Truck.

1991 GMC Utility Master Sewer Inspection Truck, gas eng., auto. trans., crane, sink and toilet, 26,089 miles.

SWEEPER & BUCKET TRUCKS

2008 INTERNATIONAL Tympco Sweeper Truck, CA Retrofit.

2007 STERLING SC8000 2-Axle Elgin Sweeper Truck, Cummins diesel eng., auto. trans., Elgin Eagle sweeper body, CA Retrofit, 122,413 miles.

2000 GMC C7500 2-Axle Bucket Truck, gas eng., auto. trans., Terex Telelect Hi Ranger 5FB48 48' boom, single bucket, 49,694 miles.

CHEVROLET C70 Kodiak Bucket Truck, diesel eng., 5/2 trans., w/Altec 2-man bucket.

1993 FORD F Super Duty Bucket Truck, diesel eng., A/T, w/Altec AT-250G insulated boom, aux hyd.

INTERNATIONAL 4900 2-Axle Bucket Truck w/Dump Bed, diesel eng., manual trans., Altec LB650 insulated 50' boom, aux. hyd. bucket, CA Retrofit, 75,322 miles.

FIRE ENGINES & EMERGENCY VEHICLES

1989 SIMON Duplex L175-89 3-Axle Hook Ladder Truck, Detroit diesel eng., Allison auto. trans., aerial ladder body, 74,304 miles.

1987 DUPLEX GRUMMAN 4563-87 Aerial Caterpillar 3-Axle Pumper Ladder Truck, Detroit diesel eng., auto. trans., Grumman aerial Caterpillar pumper ladder body, 93,991 miles.

1991 BECK 2-Axle Pumper Truck, Detroit diesel eng., morse auto. trans., pumper body, 37,657 miles.

1988 SPARTAN GRUMMAN 2-Axle Pumper Truck, Detroit diesel eng., auto. trans., 2,000-gallon water pump.

Grumman Pumper Body, 98,304 miles.

2003 GMC 3500 4X4 Utility Pickup, gas eng., auto. trans., Ctec utility bed, CFE pump and tank, foam flow, bad trans., 52,997 miles.

2004 FREIGHTLINER 2-Axle Ambulance, Mercedes Benz diesel eng., Allison auto. trans., Horton ambulance body, 106,205 miles.

FLATBED & UTILITY TRUCKS

2001 DODGE Ram 3500 4X4 Flatbed Dump Truck, auto. trans., 54,139 miles.

1999 GMC C-6500 2-Axle Flatbed Truck, gas eng., auto. trans., 115,177 miles.

2008 FORD F-350 XL Super Duty Utility Truck, gas eng., auto. trans., Royal utility body, Venturo crane, 168,656 miles.

2001 DODGE Ram 2500 Valve Actuator Truck, gas eng., manual trans., Wachs valve actuator, Stahl body, 29,937 miles.

2003 FORD F-350 Utility Pickup, gas eng., auto. trans., Lift Moore crane, Western truck fab body, 146,069 miles.

2005 FORD F-250 Utility Truck, gas eng., auto. trans., Pacific utility body, 58,074 miles.

CHEVROLET Silverado 3500 Utility Truck, diesel eng., auto. trans., Harbor utility bed, 133,460 miles.

1997 FORD F-350 Utility Truck, gas eng., A/T, w/pesticide sprayer.

1994 FORD Cargo CF7000 Utility Truck, diesel eng., Felsted auto. trans., Econo folding crane, service utility body, non-compliant 8,553 miles.

1997 FORD F-250 Heavy-Duty Utility Truck, gas eng., auto. trans., Stahl utility body, 140,020 miles.

1998 CHEVROLET 2500 Utility Truck, gas eng., auto. trans., Stahl utility body, 134,117 miles.

1998 DODGE Ram 2500 Utility Pickup, gas eng., auto. trans., Tommy lift gate, North Bay utility bed, bad trans., 77,343 miles.

GMC S-15 Utility Pickup, gas eng., auto. trans., Knapheide utility bed, 92,722 miles.

TRAILERS

HOLDEN IND HCT4423 40' 2-Axle Drop Deck Trailer, w/beaver tail, winch.

2008 JACOBSEN GNB-219 2-Axle Gooseneck Equipment Trailer, w/fold down ramps.

ZIEMAN 1150 2-Axle Tilt Equipment Trailer, pintle hitch.

ZIEMAN 2-Axle Equipment Trailer, pintle hitch.

(3) 2007 8 x 20 Portable Office Trailers, lights and electricity.

(2) 2005-2004 Roose Reeler RR-135 Single-Axle Reel Trailers.

DITCH WITCH S1-A Single-Axle Trencher Trailer, ball hitch.

PACE AMERICAN F58SA Single-Axle Cargo Trailer, pintle hitch.

WELLS FARGO SWB-VF Single-Axle Cargo Trailer, pintle hitch.

Single-Axle Motorcycle Trailer, ball hitch.



DAY 1: FRIDAY, FEBRUARY 19 CONTINUED



**1991 INTERNATIONAL 4900
BUCKET TRUCK WITH DUMP BED**



(1 OF 3) 8X20 PORTABLE OFFICES



**ASSORTED NEW AND UNUSED
TOOL BOXES, TOOLS AND
ATTACHMENTS**



**(1 OF 10) ASSORTED
FLATBED TRUCKS**

RING 2: FENCE LINE STARTS AFTER RING 1

★ (Over 350) Lots of Misc. Equipment, Power Tools, Lumber & Construction Supplies ★

Many Items Listed Below Will Be Sold in Ring 1

NEW & UNUSED EQUIPMENT

(4) JBX 4000 48" Skid Steer Fork Attachments; (3) MUSTANG LF 88 Plate Compactors; MUSTANG ML 80S Rammer; MUSTANG 6500 DP Silent Diesel Generator; (4) MUSTANG MP 4800 2" Submersible Pumps; (3) MUSTANG CV 3500 Concrete Vibrators; (6) 3-Piece 14" Premium Diamond Blades; (3) HUSKIE B65 Electric Jack Hammers; (4) 2" x 50' Discharge Water Hoses; (3) Auto Darkening Welding Helmets; (4) 1/2" Drive Air Impact Wrench Kits; (2) 3/8" x 50' Automatic Air Hose Reel; 3-Piece Air Spray Gun Kit; (2) STIFF NECK Pintle Hitches; (2) 4-Pack 10,000-Lb. Ratchet Cargo Straps; (8) 12-Ply 12x16.5 Skid Steer Tires (2 lots of 4 each); TRX HB 350 Skid Steer Hydraulic Hammer; (4) 800 AMP 25' Extra Heavy-Duty Booster Cables; 20' Heavy-Duty Bi-Parting Wrought Iron Driveway Gate; 82" Heavy-Duty Rotary Tiller

c/w gear drive 3-pt. PTO shaft w/overrunning clutch; 12' x 28' Peak Ceiling Carport c/w commercial fabric and roll-up door; 30' x 65' x 15' Peak Ceiling Double-Door Storage Building c/w commercial fabric water proof UV and fire resistant 12' drive-through doors at two ends; 10' x 10' Commercial Instant Pop-Up Tents; 10' x 20' Commercial Instant Pop-Up Tents; Heavy-Duty Tire Changer c/w 110 volt 60 hz; Heavy-Duty Wheel Balancer c/w 110 volt 60 hz; 10' 20-Drawer Heavy-Duty Work Bench c/w 40" high hanging wall stainless steel; 3/8" x 50' Air Hose Reels; 12-Ton Pipe Bender; 72" Skid Steer Hydraulic Fork Grapple c/w 2 cylinders; 84" Skid Steer 4-in-1 Bucket; 72" Skid Steer Vibratory Roller; (2) 94" Hydraulic Skid Steer Loader Dozer Blade/Snow Pushers; 170K and 125K BTU Propane Space Heaters; 50-Ton Hydraulic Shop Press; Qty. of (6) Heavy-Duty Warehouse Steel Shelving Racks c/w (6) units

72' per skid per lot; 80" Heavy-Duty Multi-Drawer Tool Cabinet c/w 12-drawers (2) X-large doors (2) X-small doors; 1-1/2 Lever Hoists; 2,000-Lbs. 12 Volt ATV Electric Winches; 20-Ton Air Hydraulic Jacks; 50-Ton Hydraulic Bottle Jack; 10-Ton Porta Power; 50' Rubber Air Hoses; Solar Welding Helmets; Battery Load Testers.

MISCELLANEOUS

JOHN BEAN Sprayers; FORD V-10 Engine; HONDA Pumps; MK Concrete Saws; Laser Levels; Rock Drills; EDCO Concrete Grinder; Pressure Washers; Steam Cleaners; Airless Paint Sprayers; Sewer Snakes; Power and Core Drills; Fence Screen; Lawn Mowers; Weed Eaters; Edgers; Trimmers; Cement Mixers; Generators; Compressors; AC Machines; Pallet of Assorted GILLIG Bus Parts and More to Come!



WAREHOUSE FORKLIFTS



2000 GMC C7500 BUCKET TRUCK



**CATERPILLAR 3208
SKID-MOUNTED GENSET**



2004 FREIGHTLINER AMBULANCE

DAY 2: SATURDAY, FEBRUARY 20 AT 10:00 A.M.

★ RING 1: Asset Seizures, Real Estate, (350+) Gov't Fleet Vehicles, Light Trucks, Boats, Motorcycles, Buses & More! ★



**2012 CHEVROLET CRUZE LT –
ASSET SEIZURE**



**2013 CHEVROLET EQUINOX –
ASSET SEIZURE**



**HARLEY DAVIDSON AND BMW
POLICE MOTORCYCLES**



**2007 FORD F-150 4X4
PICKUP TRUCKS**

BUSES

2010 FORD E-350 Paratransit Bus, gas eng., auto. trans.
2008 FORD E-350 Bus w/Wheelchair Lift, gas eng., auto. trans., Ricon wheelchair lift, Forest River bus body.
2006 FORD E-450 SD Bus w/Wheelchair Lift, diesel eng., auto. trans., Braun wheelchair lift, El Dorado national bus body.
2006 FORD E-450 Passenger Bus w/Wheelchair Lift, non runner, diesel eng., auto. trans.

MOTORCYCLES & UTILITY CARTS

2006 HARLEY DAVIDSON Road King Motorcycle.
2000 HARLEY DAVIDSON Road King Motorcycle, gas eng., manual trans., 68,478 miles.
(2) 2007 BMW R-1200 GS Motorcycles, gas eng., manual trans., 66,455 and 71,967 miles.
(2) 2007–2001 BMW R-1100 Motorcycles, gas eng., manual trans., 31,736 miles.
2001 YAMAHA Kodiak Ultramatic 4X4 ATV.
(2) SEADOO Jet Skis and Jet Ski Trailer.
HONDA ATC200 3-Wheel ATV, gas eng., auto. trans., Yamaha winch.
(2) INGERSOLL RAND Carryall Utility Carts, electric dump.
2009 GEM Flatbed Utility Cart.

DAY 2: SATURDAY, FEBRUARY 20 CONTINUED



2013 DODGE CHARGER –
ASSET SEIZURE



2006 FORD FUSION



2007 TOYOTA PRIUS



2007 CADILLAC ESCALADE –
ASSET SEIZURE

ASSET SEIZURES & FLEET VEHICLES, LIGHT TRUCKS, VANS & SUVs

ASSET SEIZURES: 2013 DODGE Charger, gas eng., A/T, 21,490 miles; 2013 CHEVROLET Equinox, gas eng., A/T, 16,737 miles; 2012 CHEVROLET Cruze LT, gas eng., A/T, 54,643 miles; 2010 HONDA Accord, gas eng., A/T, 86,145 miles; 2007 CADILLAC Escalade, gas eng., A/T, TMU miles.

GOVERNMENT FLEET VEHICLES, PARTIAL LISTING INCLUDING: (35) 2010–1997 FORD Crown Victorias; 2006 DODGE Magnum; (5) 2013–2003 TOYOTA Prius Hybrids; (13) 2014–2000 Ford Taurus; (6) 2003–2001 CHEVROLET Cavaliers; 1996 CHEVROLET Corsica; (2) 2001–1999 FORD Escort SEs; (2) 2001 TOYOTA Corolla CE; 1982 CHEVROLET El Camino; 1989 GEO Prizm; 2006 FORD Fusion; 2008 DODGE Avenger; (4) 2006–2001 CHEVROLET Impalas; (2) 2008–2000 CHEVROLET Malibus; 1998 BUICK Century; (2) 2007–2001 PONTIAC Grand Prix; 2011 CHEVROLET Caprice; HONDA Civics; 2003 LINCOLN Town Car Signature.

CNG; (5) 2004–2002 HONDA Civics; (8) 2001 FORD E-350 Vans; (5) 2001 FORD E-250 Vans; (7) FORD E-250 Vans.

PICKUPS: 1998 GMC Sierra 1500 SL Extended Cab; (2) 2001 CHEVROLET 1500 LS 4X4 Extended Cabs; 1995 GMC 3500 w/lift gate; (3) 2008–1997 FORD F-250 XLS; (14) 2004–1996 FORD Ranger 4X4 Pickups; 1988 CHEVROLET S-10 4X4; (3) 2004–2002 GMC Sierra Extended Cab 4X4s; (3) 2007–1999 FORD F-150 XLS; (2) 2005–2004 CHEVROLET Silverados; (2) 2007–1996; FORD F-150 XLTs; 2004 FORD F-150 XLT Triton Extended Cab; 1998 CHEVROLET 3500 Crew Cab; (3) 2002–2000 DODGE Ram 2500s; (2) 2004–1998 DODGE Ram 1500s; (2) 2006–2005 CHEVROLET Colorados; 2001 DODGE Dakota; 1974 CHEVROLET Cheyenne 30; 2000 FORD F-350 Cab and Chassis.

2002 FORD F-250 XL Super Duty Pickup, gas eng., auto. trans., 63,154 miles.

1998 FORD Ranger Pickup Truck w/Crane, gas eng., auto. trans., 60,519 miles.

VANS: 2008 FORD E-250 Cargo Van; 2006 CHEVROLET Uplander Van; (2) 1996–1993 FORD Aerostar Cargo Van; (2) 2000–1990 DODGE Ram 1500 Cargo Vans; 2001 FORD Econoline 350 XL Super Duty Van; (2) 2003–1999 CHEVROLET Express 3500 Cargo Van; 2001 GMC Savana 2500 Van; 2012 DODGE GRAND Caravan; 1999 CHEVROLET Astro Prisoner Van; (3) 2004–1993 Astro Vans; (2) 1999 FORD Windstar Vans; 1999 CHEVROLET Venture Van.

SUVs: (4) 2008–2004 FORD Expedition XLT 4x4s; 2008 FORD Escape Hybrid; (6) 2001–1993 CHEROKEE Sports; (4) 2004–2002 JEEP Liberty 4X4 Sports; SUBARU Legacy Station Wagon; 2002 FORD Taurus SE Station Wagon; (6) 2006–1998 FORD Explorers; (3) 2001 CHEVROLET Blazers; 2000 GMC Jimmy.



(1 OF 15) ASSORTED SUVs



2010 HONDA ACCORD –
ASSET SEIZURE



2006 DODGE MAGNUM SXT



(OVER 15) ASSORTED VANS

Call for Additions or Deletions. Items That
Are Still on Rent May Be Substituted!

AUCTION CALENDAR

FIRST CAPITOL THE AUCTION COMPANY

– A California Joint Venture Company –



THE AUCTION COMPANY



SOUTHERN CALIFORNIA LOCATION

PHONE (951) 657-5300 • FAX (951) 657-5244
4461 WADE AVE., PERRIS, CA 92571
Website: www.theauctioncompany.net

SATURDAY, APRIL 23

DEADLINE: APRIL 4

CONSTRUCTION EQUIP., TRUCKS, TRAILERS,
AUTOS & MORE

NORTHERN CALIFORNIA LOCATION

PHONE (707) 552-0739 • FAX (707) 552-8613
50 SOLANO AVE., VALLEJO, CA 94590
Website: www.1stcapitolauction.com

2-DAY AUCTION APRIL 22 & 23

DEADLINE: APRIL 4

2-DAY AUCTION JUNE 24 & 25

DEADLINE: JUNE 6

CONSTRUCTION EQUIPMENT, TRUCKS TRAILERS,
GOVERNMENT FLEET & ASSET SEIZED VEHICLES

FIRST CAPITOL
AUCTION INC.



SEALED BID

2013 TRANS 200TT Cube, fuel storage cell, like new,
4,894-gallon cap., minimum \$39,000.



TERMS & CONDITIONS:

Additional terms and conditions available day of sale, or visit
www.1stcapitolauction.com. **A 15% Buyer's Premium will apply to all items sold!**

LOCATION & DIRECTIONS: 50 Solano Avenue, Vallejo, CA. Interstate 80 to
780 West. Then to second light (Solano Avenue) and left to auction site on right side.
Check our website www.1stcapitolauction.com for map.

DAY 1: FRIDAY, FEBRUARY 19, 2016 AT 9:00 A.M.

RING 1: Construction, Rental Equipment, Large Trucks & Trailers

RING 2: Fence Line (Over 350) Lots of Misc. Equipment, Power Tools, Lumber
& Construction Supplies

DAY 2: SATURDAY, FEBRUARY 20 AT 10:00 A.M.

RING 1: Asset Seizures, Real Estate, (350+) Gov't Fleet Vehicles, Light Trucks, Boats,
Motorcycles, Buses & More!

INSPECTION: Thursday, February 18 from 9:00 A.M. – 4:30 P.M.
No inspection during auction.

REGISTRATION: You must register in order to bid. A valid driver's license is required
for registration. If you are registering as a dealer you will need a copy of your Dealer's
License and Seller's Permit. Your bidder number is a contractual document and you
are responsible for anything sold to that number. Guard it carefully. No one under the
age of 21 years old is allowed on any piece of equipment. NO CHILDREN OR PETS.

For complete terms and conditions visit www.1stcapitolauction.com

AUCTION HELD RAIN OR SHINE!



FIRST CAPITOL AUCTION INC.

COMMERCIAL LIQUIDATORS & APPRAISERS
50 Solano Ave., Vallejo, CA 94590

For more information call (707) 552-0739
Visit our Website at www.1stcapitolauction.com
or e-mail us at: auktioncap@aol.com
Liquidators & Appraisers CSL #A1621

2-DAY ★ NO MINIMUM ★ NO RESERVE

PUBLIC AUCTION

★ Bay Area Contractors ★ Hertz Equipment Rental ★ Gov't Agencies ★

DAY 1: FRIDAY, FEB. 19, 2016 AT 9:00 A.M.

★ RING 1: Construction, Rental Equip., Large Trucks & Trailers
★ RING 2: Fence Line (Over 350) Lots of Misc. Equip., Power Tools, Lumber & Construction Supplies ★

DAY 2: SATURDAY, FEB. 20, 2016 AT 10:00 A.M.

★ RING 1: Asset Seizures, Real Estate, (350+) Gov't Fleet Vehicles, Light Trucks, Boats, Motorcycles, Buses & More! ★

50 SOLANO AVENUE, VALLEJO, CALIFORNIA 94590

AUCTION HELD RAIN OR SHINE!

QS-0030532



Presorted
First Class Mail
U.S. Postage
PAID
Eugene, Oregon
Permit No. 17



REAL ESTATE PROPERTY AUCTION

Real Estate Lots to Be Sold at the First Capitol Auction Facility
Before the Fleet Vehicles (Approx. 12:00 P.M.)

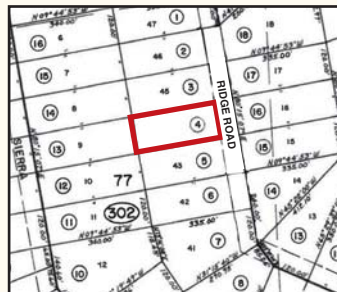
Inspection Available the Week of February 15–20, 2016 Only!



PROPERTY 1

Lot at Lake Arrowhead
on Eucalyptus Rd.

Tract 1921; Lot 21; Block 9
APN #0330-083-28-0-000
San Bernardino County, California
All Taxes Paid



PROPERTY 2

1 Acre in California Pines
on Ridge Rd.

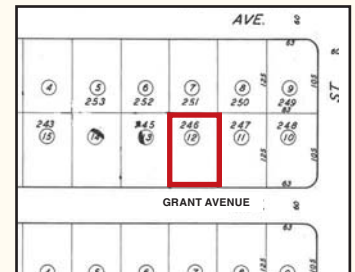
Lot 44; Block 77
APN #041-302-0411
Modoc County, California
All Taxes Paid



PROPERTY 3

2-1/3 Acres California City
on Oldsmobile Blvd.

Tract 2828; Lot 205
APN #202-181-02-008
Kern County, California
All Taxes Paid



PROPERTY 4

Lot in City Limits on Grant Ave.
Close to Central Park Lakes
California City

Tract 2223; Lot 246
APN #209-151-12-00-7
Kern County, California
All Taxes Paid



FIRST CAPITOL AUCTION INC.

LIQUIDATORS & APPRAISERS ★ (707) 552-0739 ★ Vallejo, CA